

SEEL Solid

ES-8 8mJ solid-state eye-safe Er:glass laser

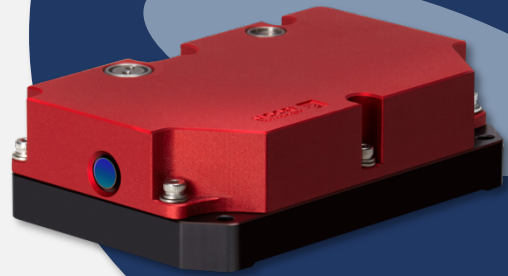
ES-8

Key Features

- Eye-safe (1535nm)
- Diode pumped
- Passive Q-switch
- High efficiency & stability
- Excellent beam quality
- Wide operating temperature
- Optional sensor included

Applications

- Ranging
- 3D laser mapping
- Pollution monitoring
- Vehicle collision avoidance
- Biomedical applications
- Military applications



Technical Data

Laser Type	Er,Yb:glass
Wavelength	1535nm
Energy	>8mJ
Pulse Width	9ns
Raw Beam Dia.	0.8mm
Beam Divergence	<3mrad
Pulse Rep. Rate	1Hz
Q-switch Type	Passive

Other Information

Dimensions	78x48x23 (mm)
Weight	300g
Electrical Draw	6V, 100A <3ms
Integ. Photodiode	Yes

Environmental

Operating Temp.	-32 ~ +60
Storage Temp.	-40 ~ +71
Electrical	MIL-STD-810G