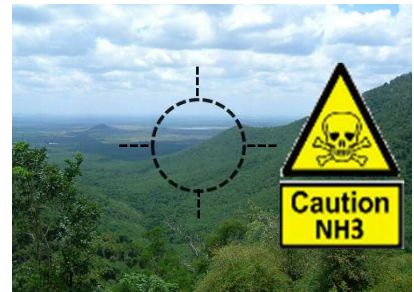
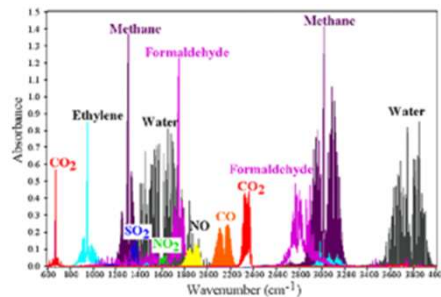
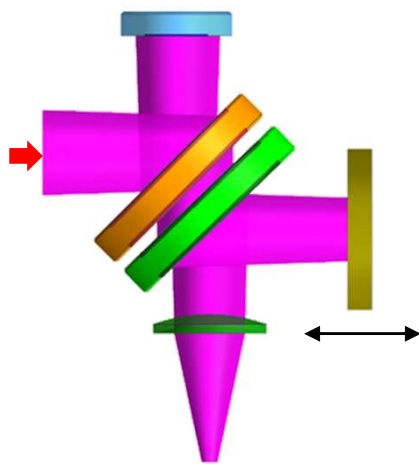


Portable FTIR Spectrometer

SPeye-portable

Features

- Linear type interferometer
- Standoff/Passive infrared technology
- Lightweight and compact design
- Real-time, built-in video and spectral analysis
- Automatic compound identification by algorithm
- Battery operated



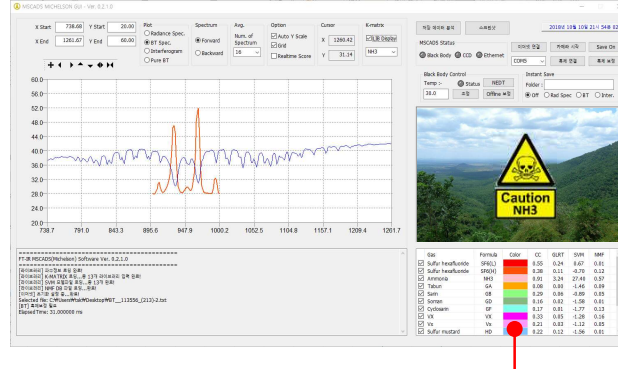
Application

- Remote sensing of toxic gases
- Air pollution monitoring
- Leak detection in factory
- Indoor facility air analysis



Software

- Automatic chemical identification by algorithm
 - Library can be extensible



Library list

[Operating Software]

Technical data

Optics / performance

Spectral range	7 ~ 14 μm
Spectral resolution	$\leq 4 \text{ cm}^{-1}$
Scan speed	$\geq 24 \text{ scans/sec}$
Weight	7 kg
Dimension	225mm \times 335mm \times 170mm
CCD camera pixel	2688 \times 1520

Power

Input Voltage	19–24VDC
Sensor Runtime	3 hrs typical

Communication

Data interface	Ethernet(100Mbps)
Sensor Display	7" screen

Accessories

- Tripod
- 19V Power Adapter

